

# SDAP Miles

Year 2019-21.

EV Star.

2 Shuttles.

25 Feet.

13 PAX.



**San Diego**  
**AIRPORT PARKING CO.**

Yellow Fill Cells = High Monthly Miles

U1 & U2 = GreenPower Motor EV Star's (activated in fleet 8-15-19)

## 2019-2020 SDAP FLEET SHUTTLE MILES

MONTH	P1 (Diesel)	M1 (Diesel)	Y1 (Diesel)	U1 (GP EV)	U2 (GP EV)	Z3 (MV EV)	V2 (MV EV)	TOTAL	GP	GP %	U2 %
								19-2020	TOTAL		
19-Jul	4,760	7,190	4,810	0	0	0	0	16,760	0	0%	0%
19-Aug	4,766	6,872	4,515	1,553	900	0	0	18,606	2,453	13%	5%
19-Sep	4,145	3,439	5,185	1,847	2,400	0	0	17,016	4,247	25%	14%
19-Oct	4,213	4,999	4,425	1,101	2,577	0	0	17,315	3,678	21%	15%
19-Nov	3,471	3,502	5,275	2,299	1,658	0	0	16,205	3,957	24%	10%
19-Dec	1,583	5,254	4,200	977	3,242	891	0	16,147	4,219	26%	20%
20-Jan	867	5,064	4,667	1,084	3,456	1,910	0	17,048	4,540	27%	20%
20-Feb	647	5,273	5,328	1,139	2,586	1,402	0	16,375	3,725	23%	16%
20-Mar	0	1,213	3,713	3,551	1,652	729	0	10,858	5,203	48%	15%
20-Apr	0	0	13	2,264	380	300	0	2,957	2,644	89%	13%
20-May	0	0	0	3,814	1,189	0	0	5,003	5,003	100%	24%
20-Jun	0	0	0	3,875	3,353	0	0	7,228	7,228	100%	46%
<b>TOTALS</b>	<b>24,452</b>	<b>42,806</b>	<b>42,131</b>	<b>23,504</b>	<b>23,393</b>	<b>5,232</b>	<b>0</b>	<b>161,518</b>	<b>46,897</b>	<b>29%</b>	<b>14%</b>
<b>Monthly Average</b>	<b>15.1%</b>	<b>26.5%</b>	<b>26.1%</b>	<b>14.6%</b>	<b>14.5%</b>	<b>3.2%</b>	<b>0.0%</b>	<b>100.0%</b>	<b>3,908</b>		
<b>Annual Average by OEM</b>		<b>109,389</b>	<b>68%</b>	<b>46,897</b>	<b>29.0%</b>	<b>5,232</b>	<b>3.2%</b>				
<b>Odometer Miles</b>				<b>23,515</b>	<b>23,299</b>						

## 2020-2021 SDAP FLEET SHUTTLE MILES

MONTH	P1 (Diesel)	M1 (Diesel)	Y1 (Diesel)	U1 (GP EV)	U2 (GP EV)	Z3 (MV EV)	V2 (MV EV)	TOTAL	GP	GP %	U2 %
								20-2021	TOTAL		
20-Jul	0	0	0	3,929	4,860	0	0	8,789	8,789	100%	55%
20-Aug	0	0	0	4,358	4,828	0	0	9,186	9,186	100%	53%
20-Sep	0	0	0	3,225	5,504	0	297	9,026	8,729	97%	61%
20-Oct	0	0	0	3,092	5,366	0	1,151	9,609	8,458	88%	56%
20-Nov	0	0	0	5,390	1,614	0	2,400	9,404	7,004	74%	17%
20-Dec	0	0	0	4,777	1,861	0	1,564	8,202	6,638	81%	23%
21-Jan	0	0	0	3,783	2,415	0	958	7,156	6,198	87%	34%
21-Feb	0	0	0	4,944	967	50	735	6,696	5,911	88%	14%
21-Mar	0	0	0	5,180	2,621	1,176	707	9,684	7,801	81%	27%
21-Apr	0	0	0	4,106	5,276	0	1,169	10,551	9,382	89%	50%
21-May	0	0	0	6,148	3,480	20	401	10,049	9,628	96%	35%
21-Jun	0	0	0	5,824	5,822	30	1,694	13,370	11,646	87%	44%
21-Jul	0	0	0	3,510	3,231	2,344	2,807	11,892	6,741	57%	27%
14-Aug	0	0	0	2,040	1,901	0	985	4,926	3,941	80%	39%
<b>TOTALS</b>	<b>0</b>	<b>0</b>	<b>0</b>	<b>60,306</b>	<b>49,746</b>	<b>3,620</b>	<b>14,868</b>	<b>128,540</b>	<b>110,052</b>	<b>86%</b>	<b>39%</b>
<b>Monthly Average</b>				<b>46.9%</b>	<b>38.7%</b>	<b>2.8%</b>	<b>11.6%</b>	<b>9,521</b>	<b>8,152</b>		
<b>Annual Average by OEM</b>				<b>110,052</b>	<b>85.6%</b>	<b>18,488</b>	<b>14.4%</b>				
<b>Odometer Miles as of 8-14-21</b>				<b>83,821</b>	<b>73,045</b>						

# 19-2020 Fleet Miles

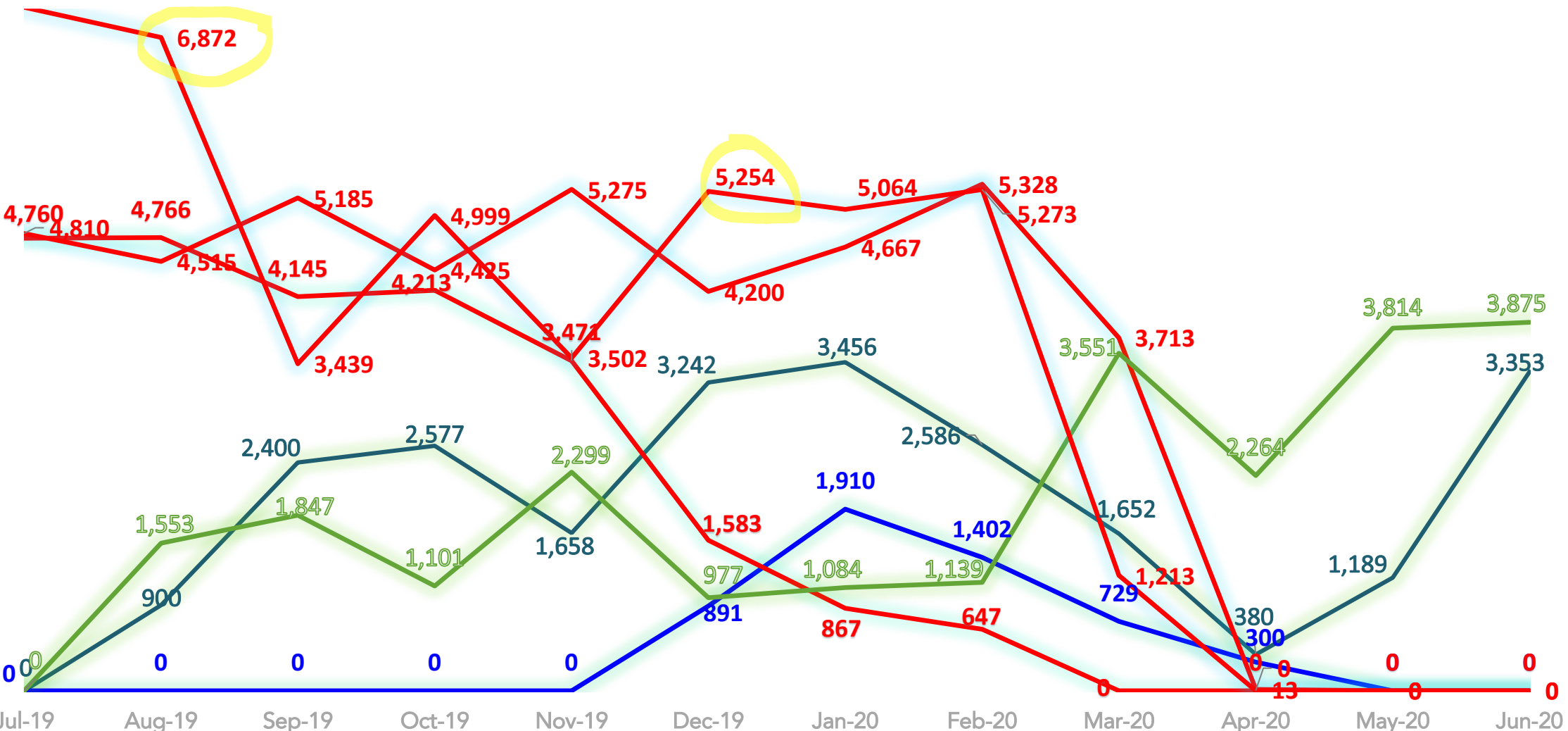
6 Shuttles in Fleet (7-2019 to 6-2020)

161,518 Annual Mi.  
(Fleet)

20-100% EV Stars.  
(Mo. average % all miles)

EV Stars Active 8-15-19.

— U2 EV Star — Z3 E-Pro — P1 Diesel — Y1 Diesel — U1 EV Star — M1 Diesel — High Miles



Annual Miles
23,504 (U1)
23,393 (U2, vin 2011)
42,806 (M1)
42,131 (Y1)
24,452 (P2)
5,232 (Z3)

# 20-2021 Fleet Miles

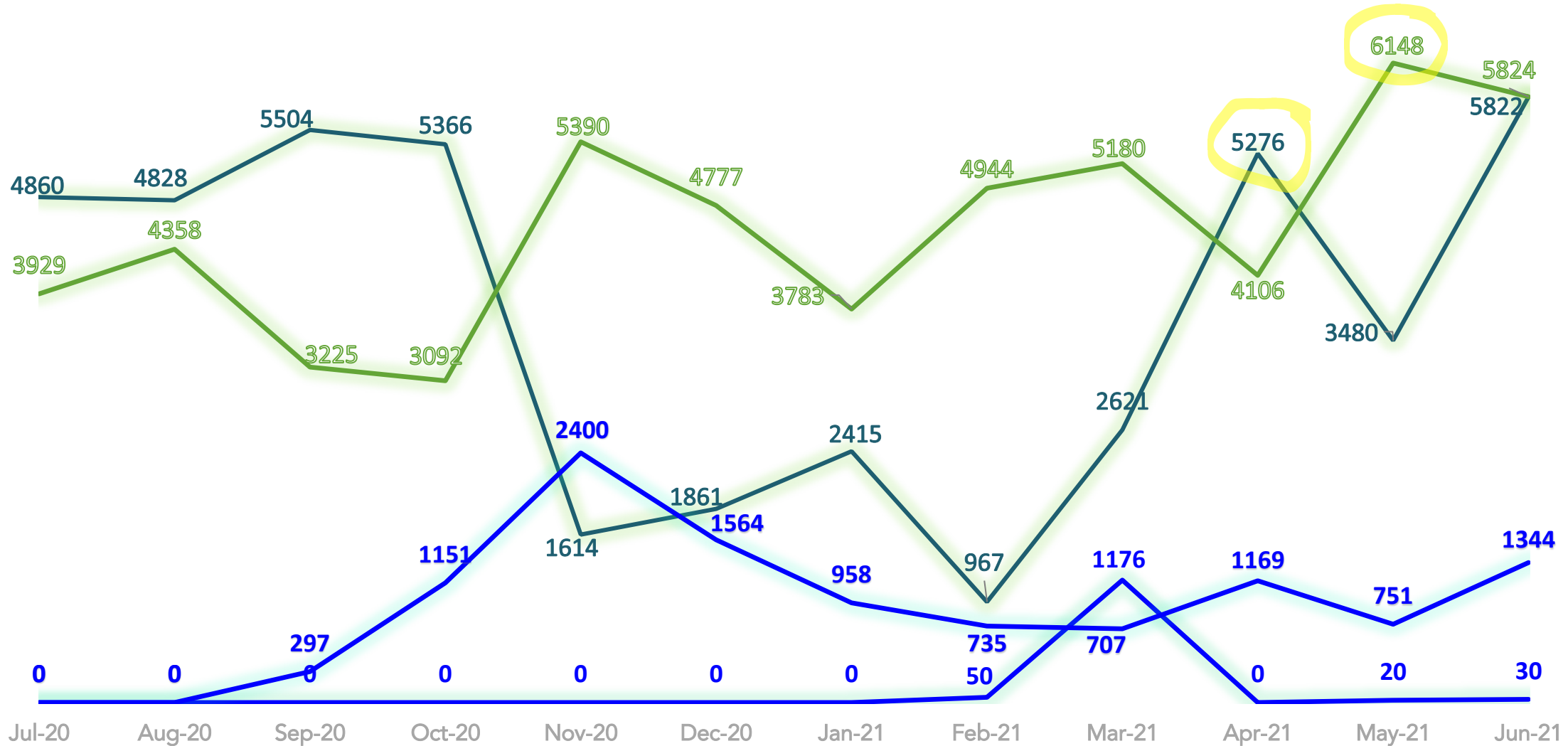
4 Shuttles in Fleet (7-2020 to 6-2021)

111,722 Annual mi.  
(Fleet)

89% EV Stars.  
(Average % all miles)

5.3k mi (Average High).  
(EV Star achieves parity to diesel)

— U2 EV Star — Z3 E-Pro — V2 E-Pro — U1 EV Star — High Miles



## Annual Miles

54,756  
(U1)

44,614  
(U2, vin 2011)

11,076  
(V2)

1,276  
(Z3)

# 2020 GP Mileage

Monthly/each.

40k/mi Annual.

90% Up-Time.

5,504 VMT/mo.

## SDAP 2020 Miles

U1 Shuttle U2 Shuttle



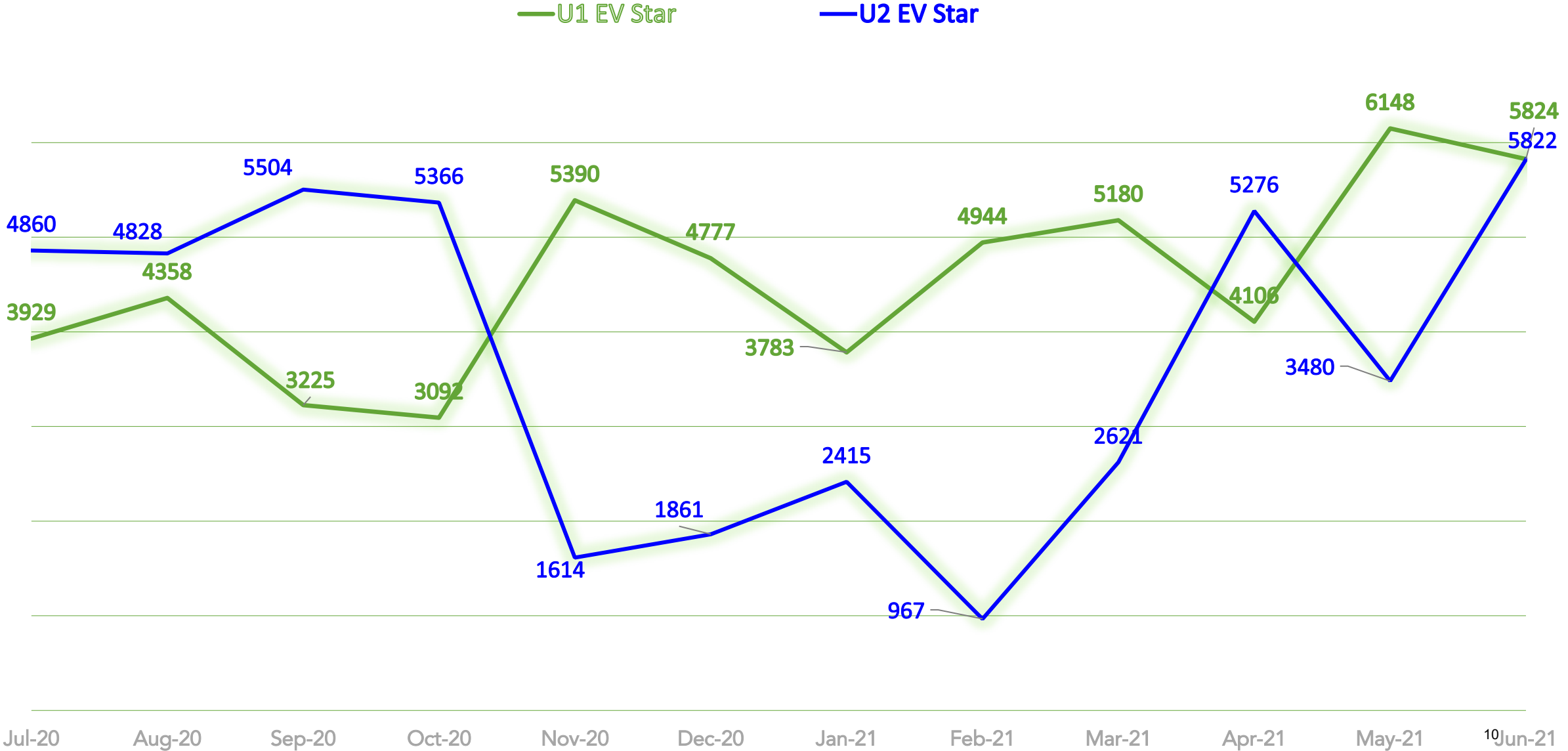
# 20-2021 GP Mileage

12 Mo/ea.

50k/mi Annually.

93% Up-Time.

6,148 VMT/mo.



# U2 Daily Miles

(1-2021 to 4-2021)

Jan = 2415 (34%).

(GP Miles = 87%)

Feb = 967 (14%).

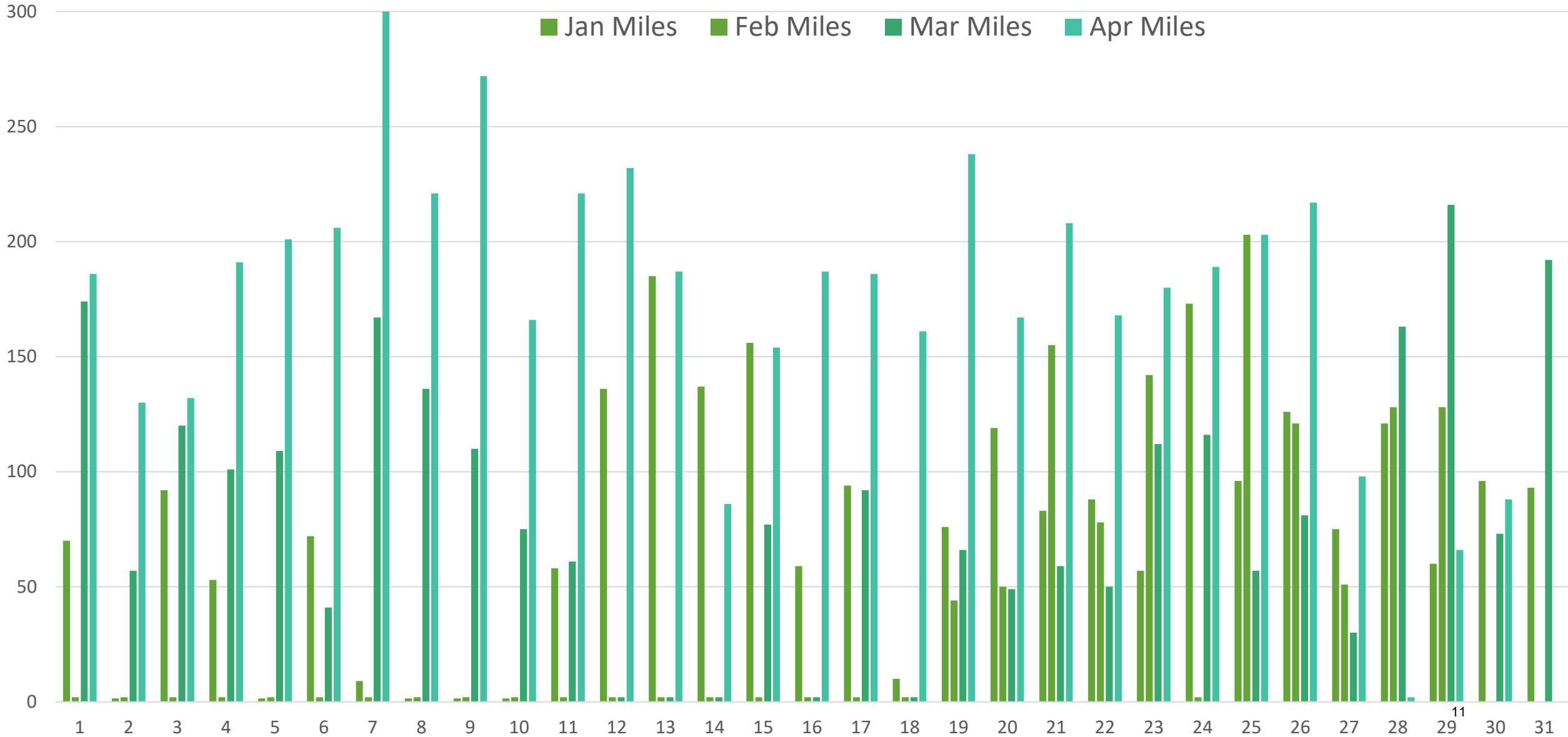
(GP Miles = 88%)

Mar = 2621 (27%).

(GP Miles = 81%)

Apr = 5276 (50%).

(GP Miles = 89%)



# U2 Daily Miles

(5-2021 to 8-14-2021)

May = 3480 (35%).

(GP Miles = 96%)

Jun = 5822 (44%).

(GP Miles = 87%)

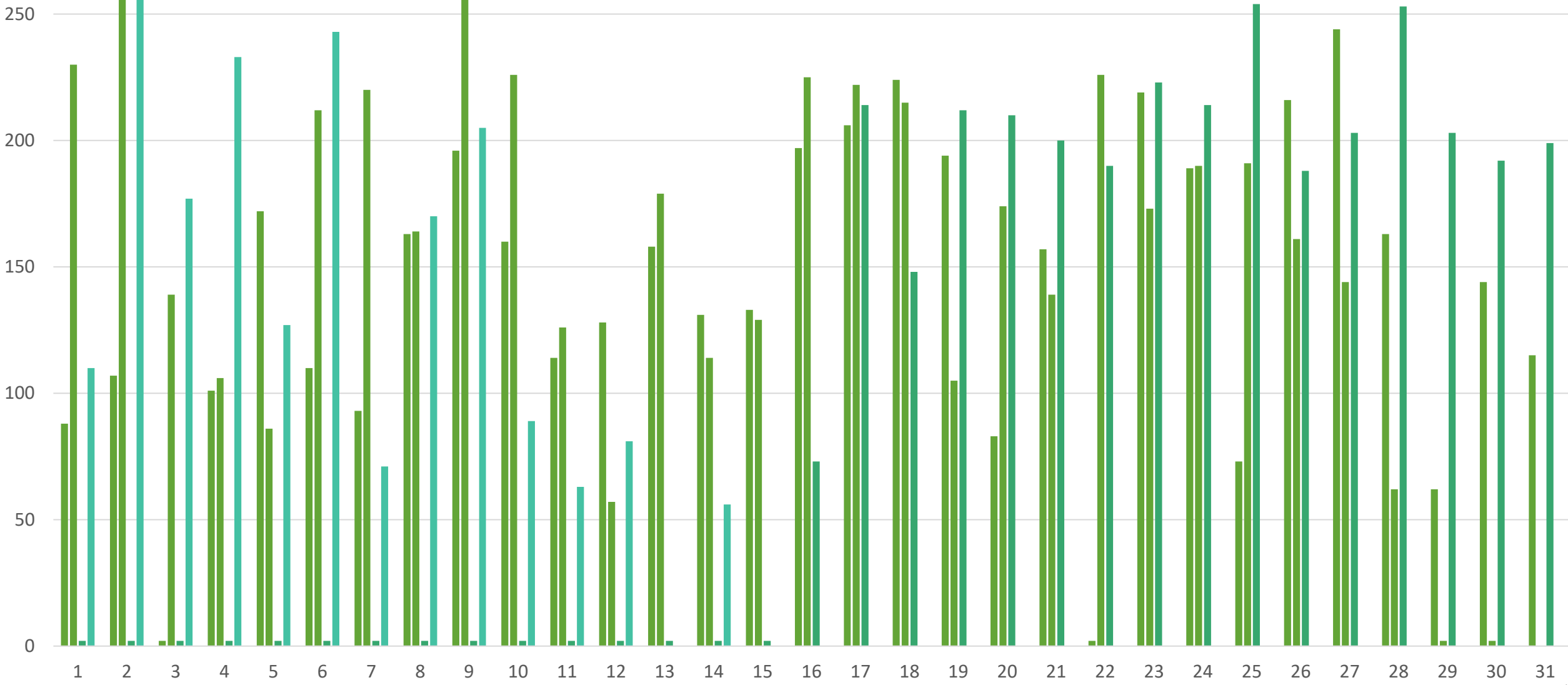
Jul = 3231 (27%).

(GP Miles = 57%)

Aug = 1901 (39%).

(GP Miles = 80%)

■ May Miles ■ Jun Miles ■ Jul Miles ■ Aug Miles





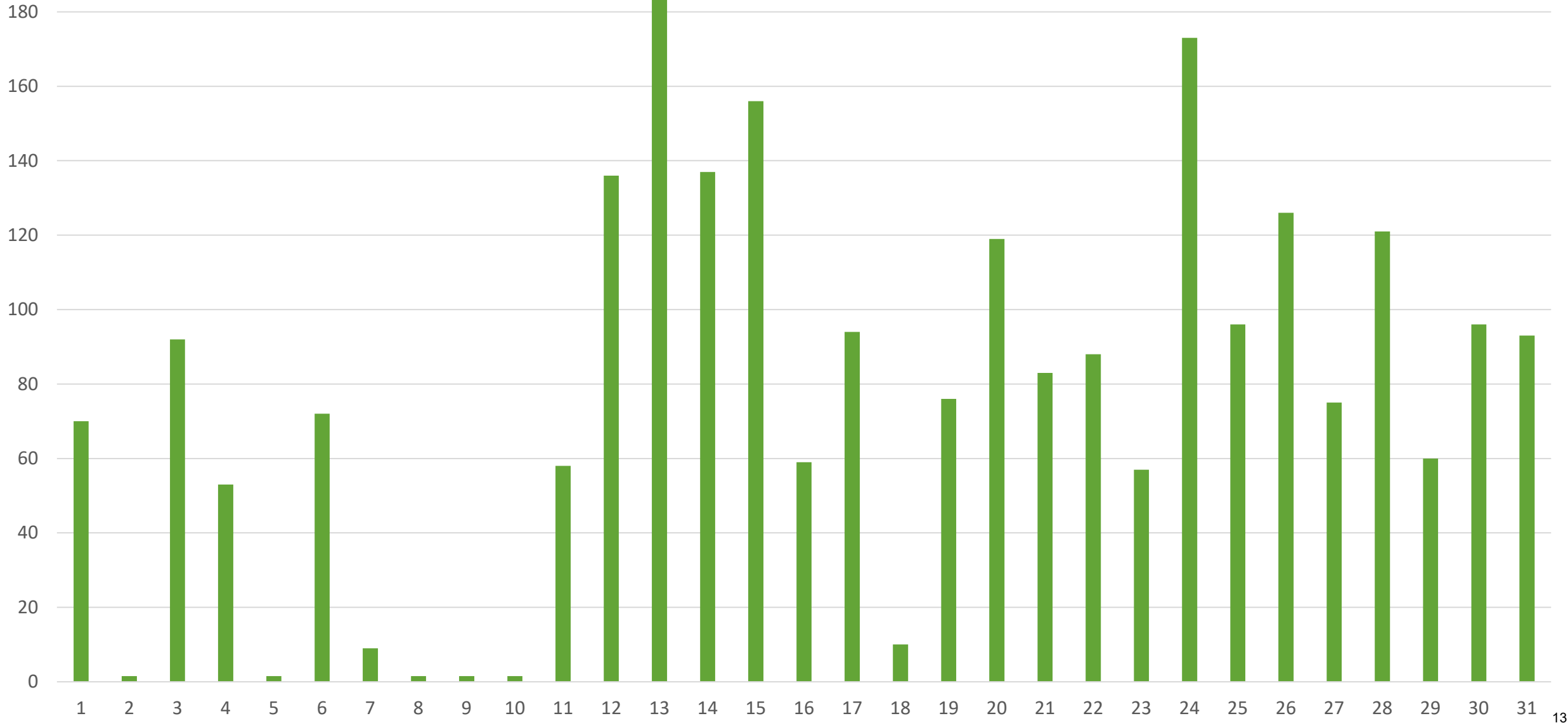
# U2 Daily Mileage

Jan 2021.  
(Odometer: 49.7k)

2415 mi/mo.

Maintenance \$: \$0.

Service Days: 4.  
(Battery Diagnostic)



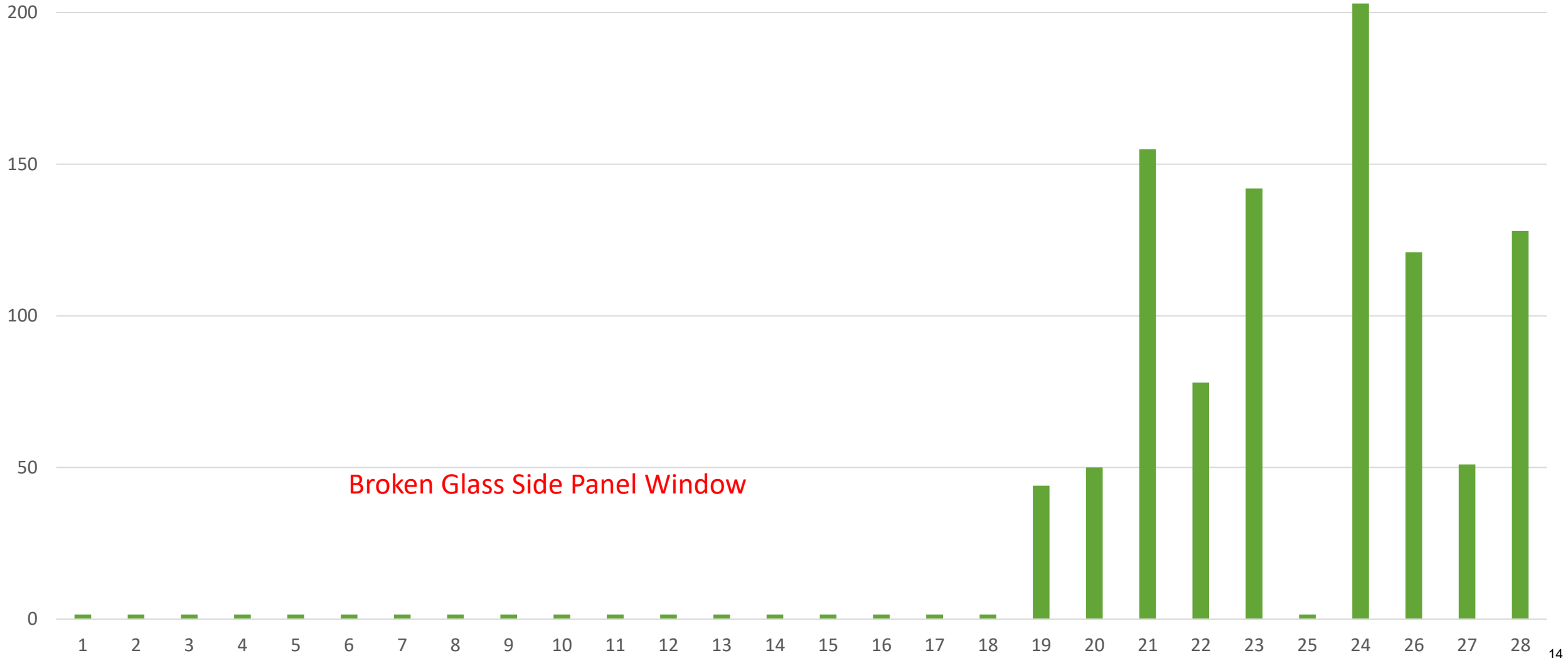
# U2 Daily Mileage

Feb 2021.  
(Odometer: 50.7k)

967 mi/mo.

Maintenance \$: \$2168.  
(Window, Brakes, Lights)

Service Days: 15.



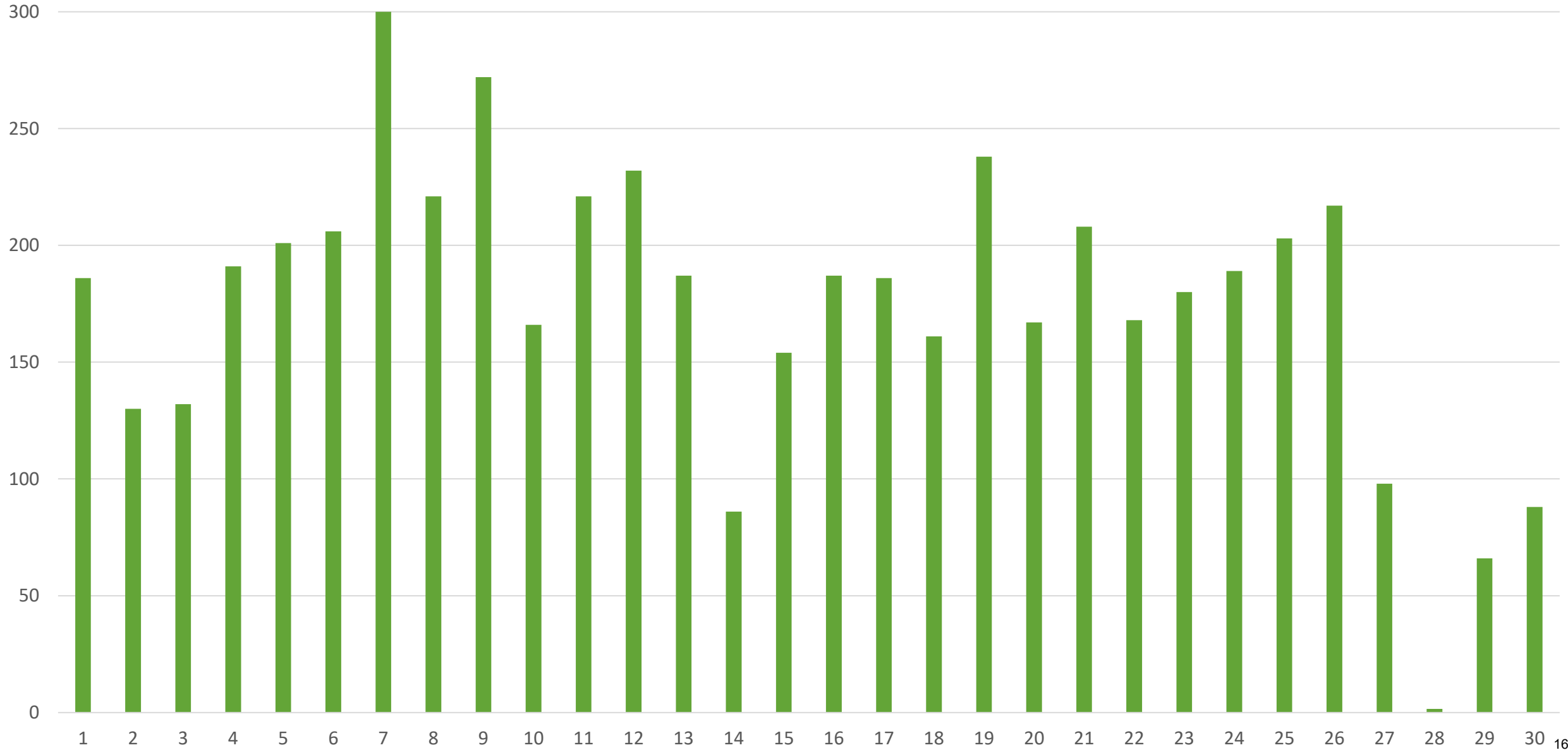
# U2 Daily Mileage

Apr 2021.  
(Odometer: 58.6k)

5276 mi/mo.

Maintenance \$: \$785.  
(12V Battery, Tow, Parking Brake)

Service Days: 1.



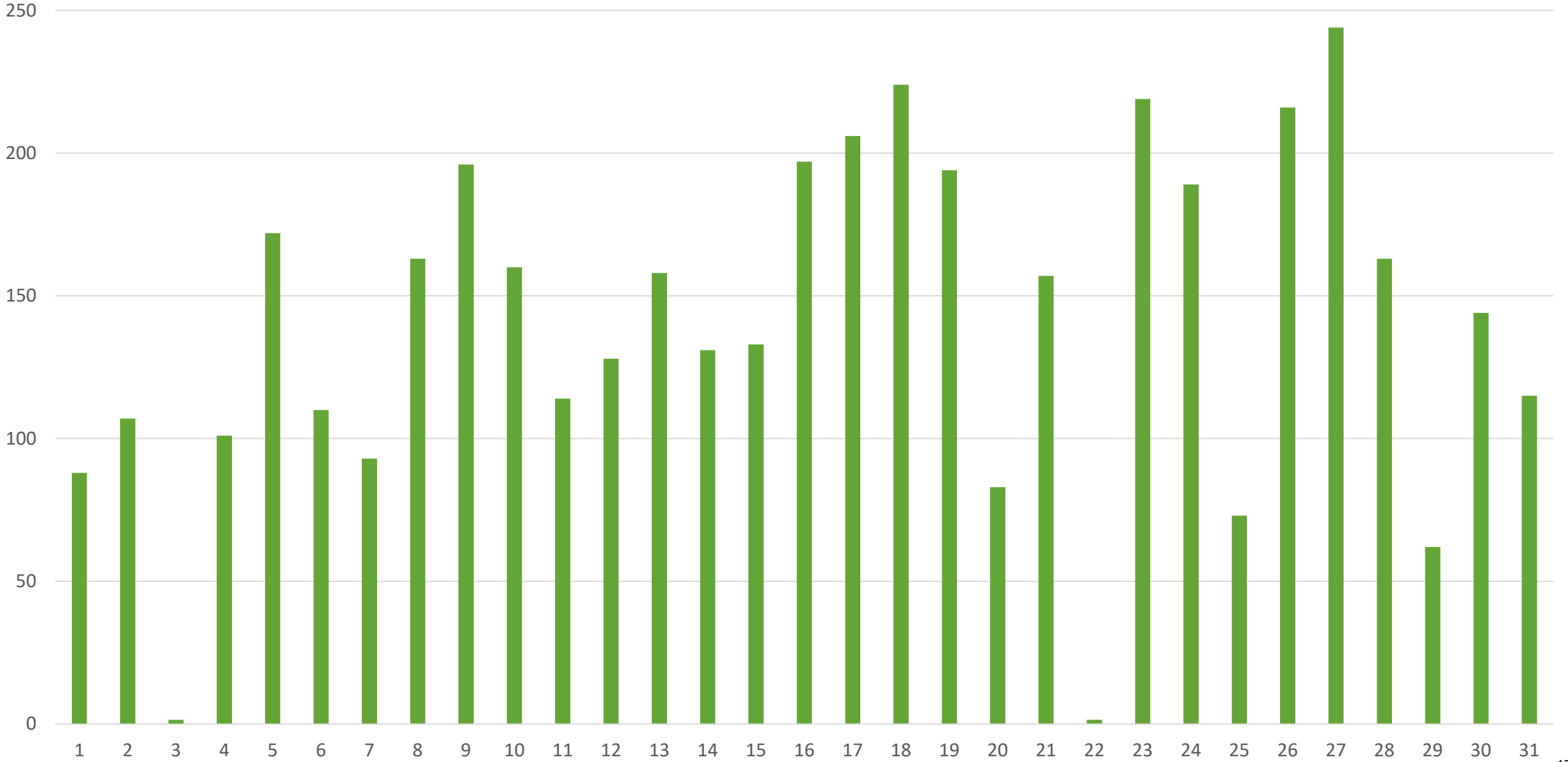
# U2 Daily Mileage

May 2021.  
(Odometer: 62.1k)

3480 mi/mo.

Maintenance \$: \$0.

Service Days: 0.



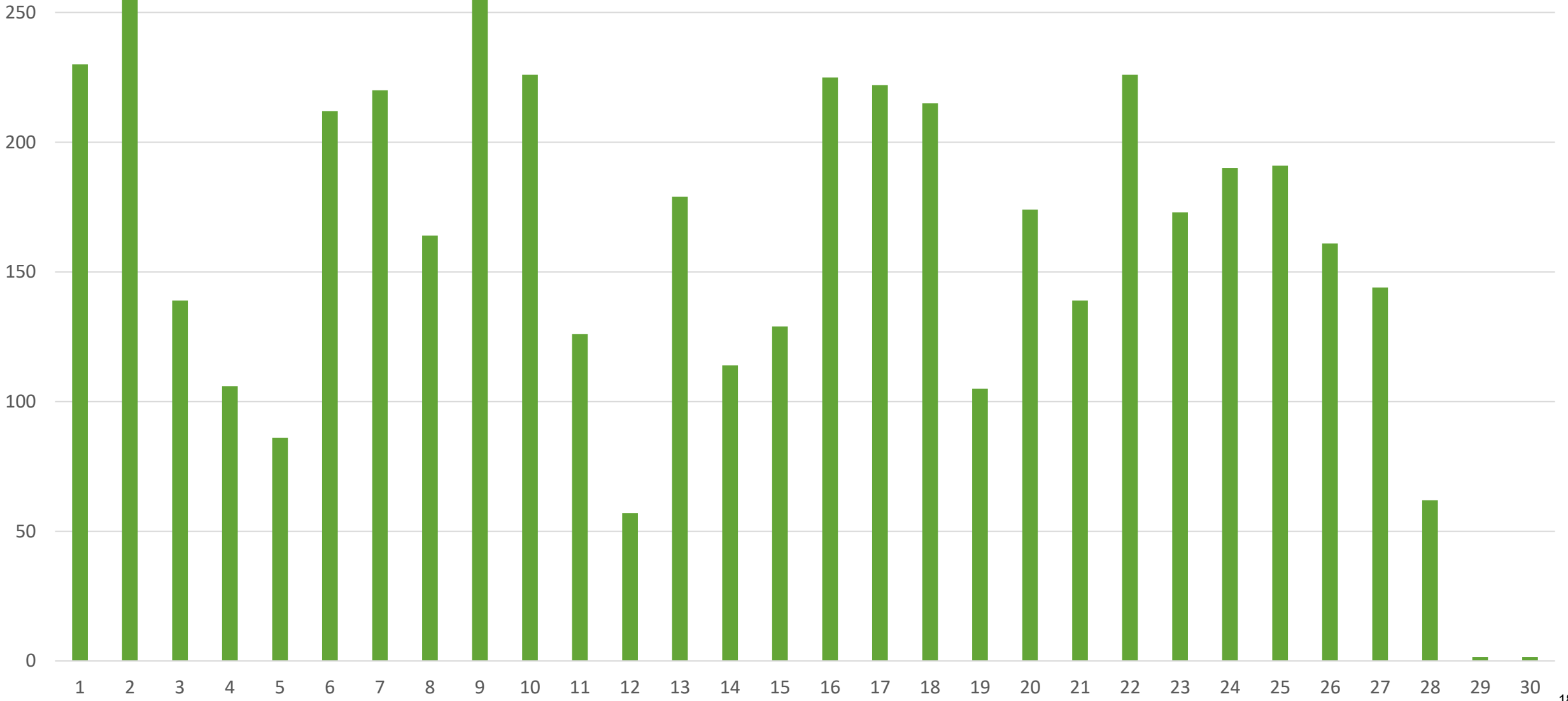
# U2 Daily Mileage

June 2021.  
(Odometer: 67.9k)

5822 mi/mo.

Maintenance \$: \$2152.  
(Tires, Cabin Filter, Lights)

Service Days: 1.



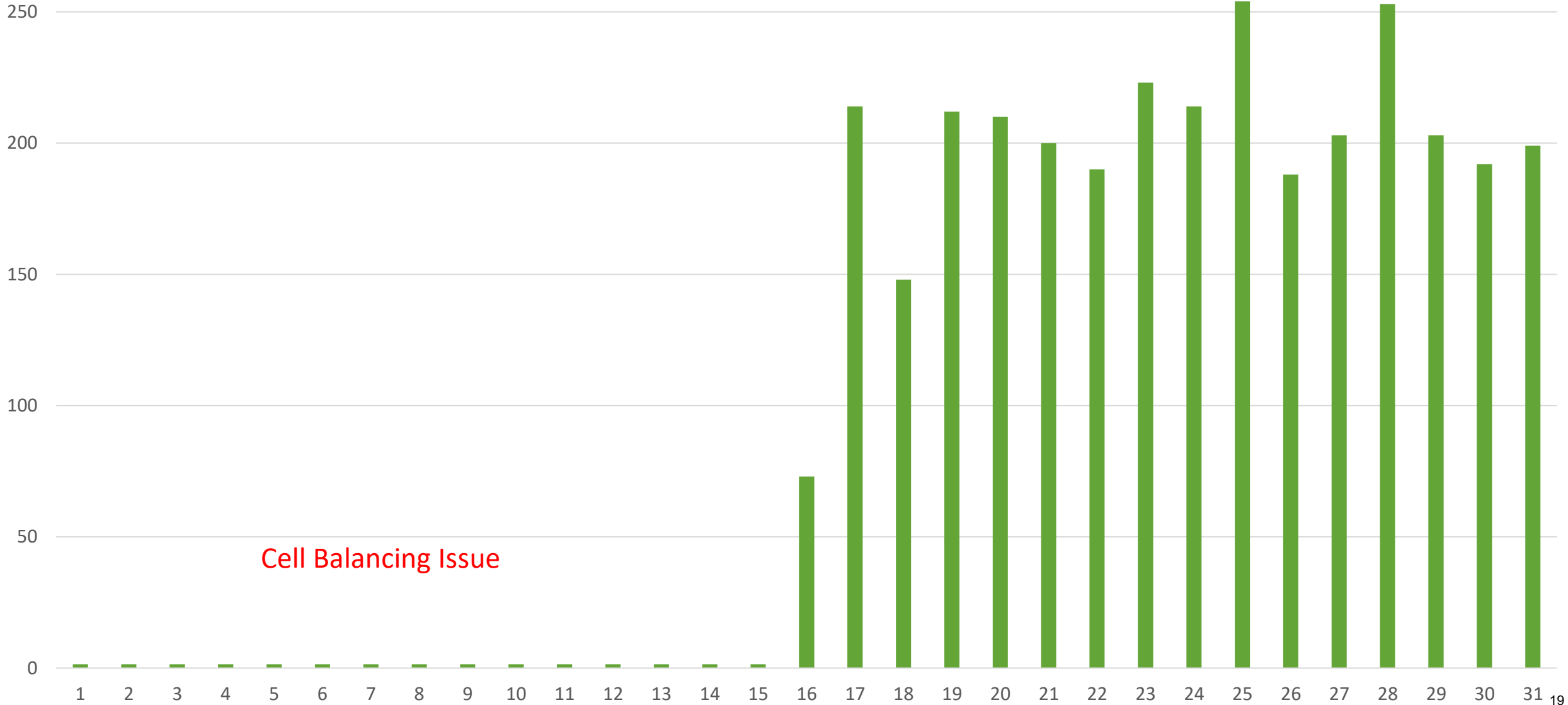
# U2 Daily Mileage

July 2021.  
(Odometer: 71.1k)

3231 mi/mo.

Maintenance \$: \$2088.  
(Shocks, Alignment)

Service Days: 15.  
(Cell Balancing Diagnostic)



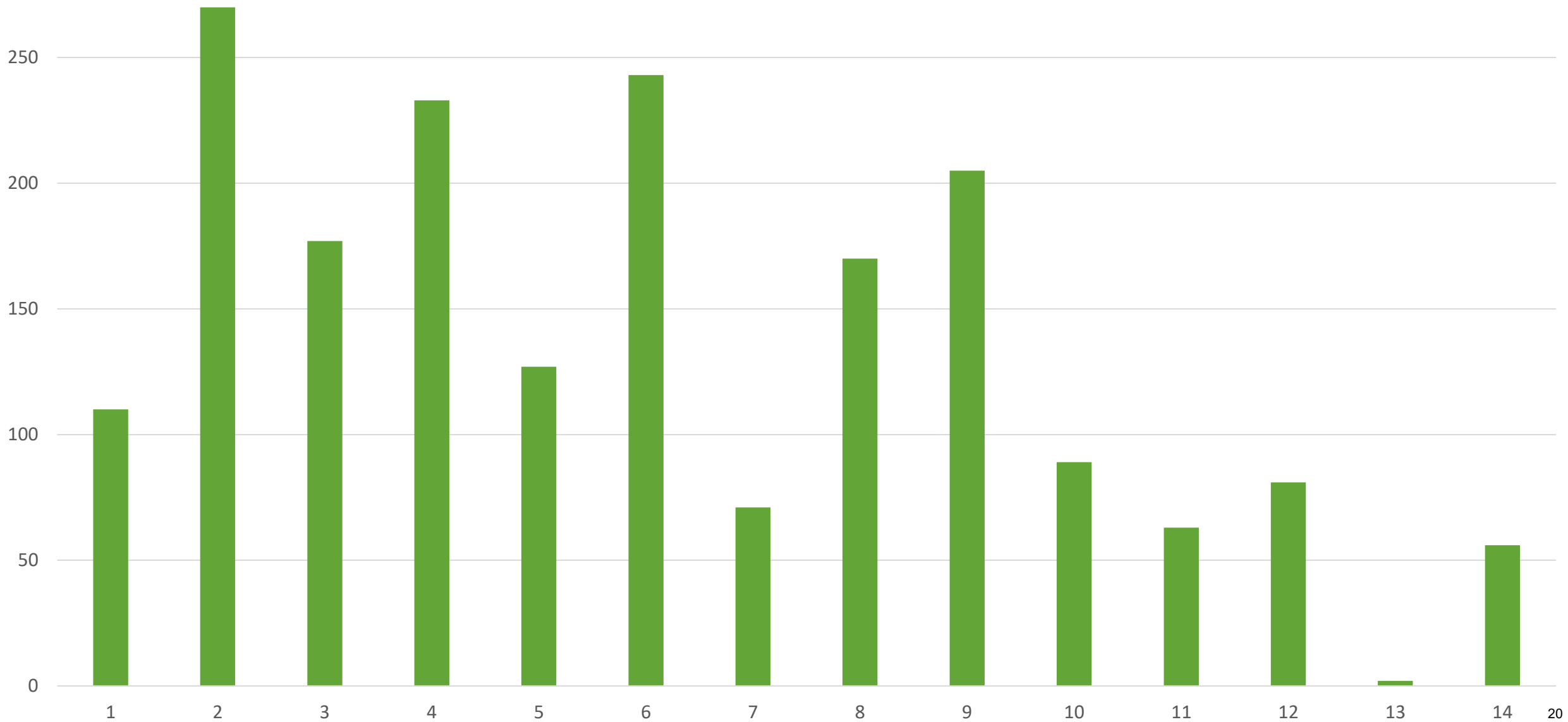
# U2 Daily Mileage

Aug 2021.  
(Odometer: 73k)

1901 mi/mo.

Maintenance \$: \$255.  
(12V Battery)

Service Days: 1.



## "EFFICIENCY"

- DATA = 25 WEEKS
- EFFICIENCY = 0.80 kWh/MILE

## "RANGE"

- SEPTEMBER 22, 2020
- ONE DAY, ONE BUS (#U2)
- 18 HOURS
- 3 DRIVERS
- DISTANCE = 266 MILES (213 kWh)

### Use Case Facts:

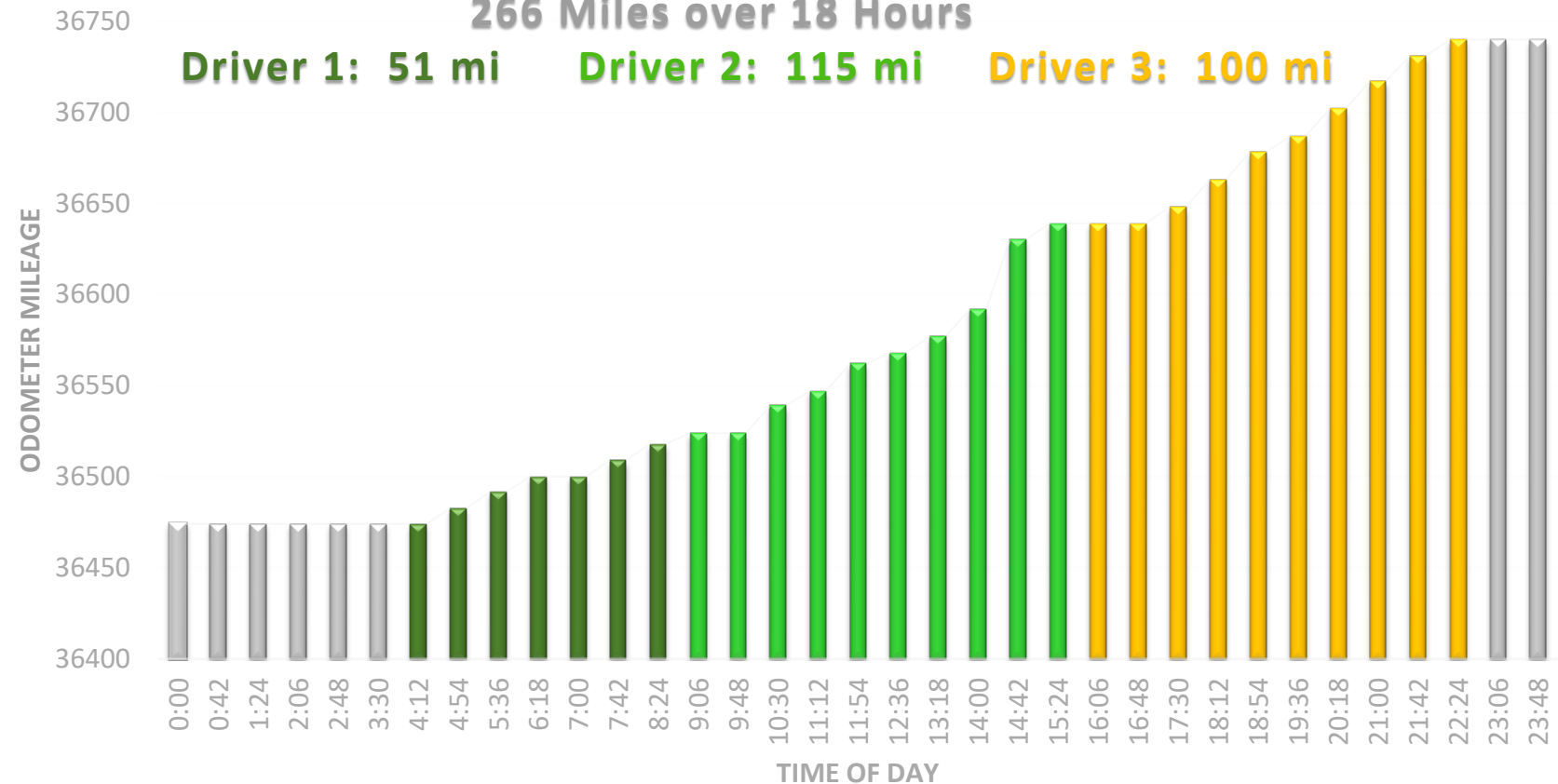
Date 9-22-20, total 266 miles in one bus, 3 driver shifts in one shuttle (51 mi=driver 1, 115 mi=driver 2, 100 mi=driver 3), 18 hours of total driver shift time on this day, start time 4:30am, end time 10:30pm, average mph is 20-30, top average speed is 50-60 mph, efficiency of 0.80 kWh per mi has been validated and data shown is collected over 25 days. Mileage graph shown is from vehicle telematics and efficiency was validated by electricity & charging meters while monitoring routes on these dates.

FUEL EFFICIENCY .80 kWh/mi (1.25 Mi/kWh) = 25 weeks



## 266 Miles over 18 Hours

Driver 1: 51 mi    Driver 2: 115 mi    Driver 3: 100 mi





# U2 Maintenance

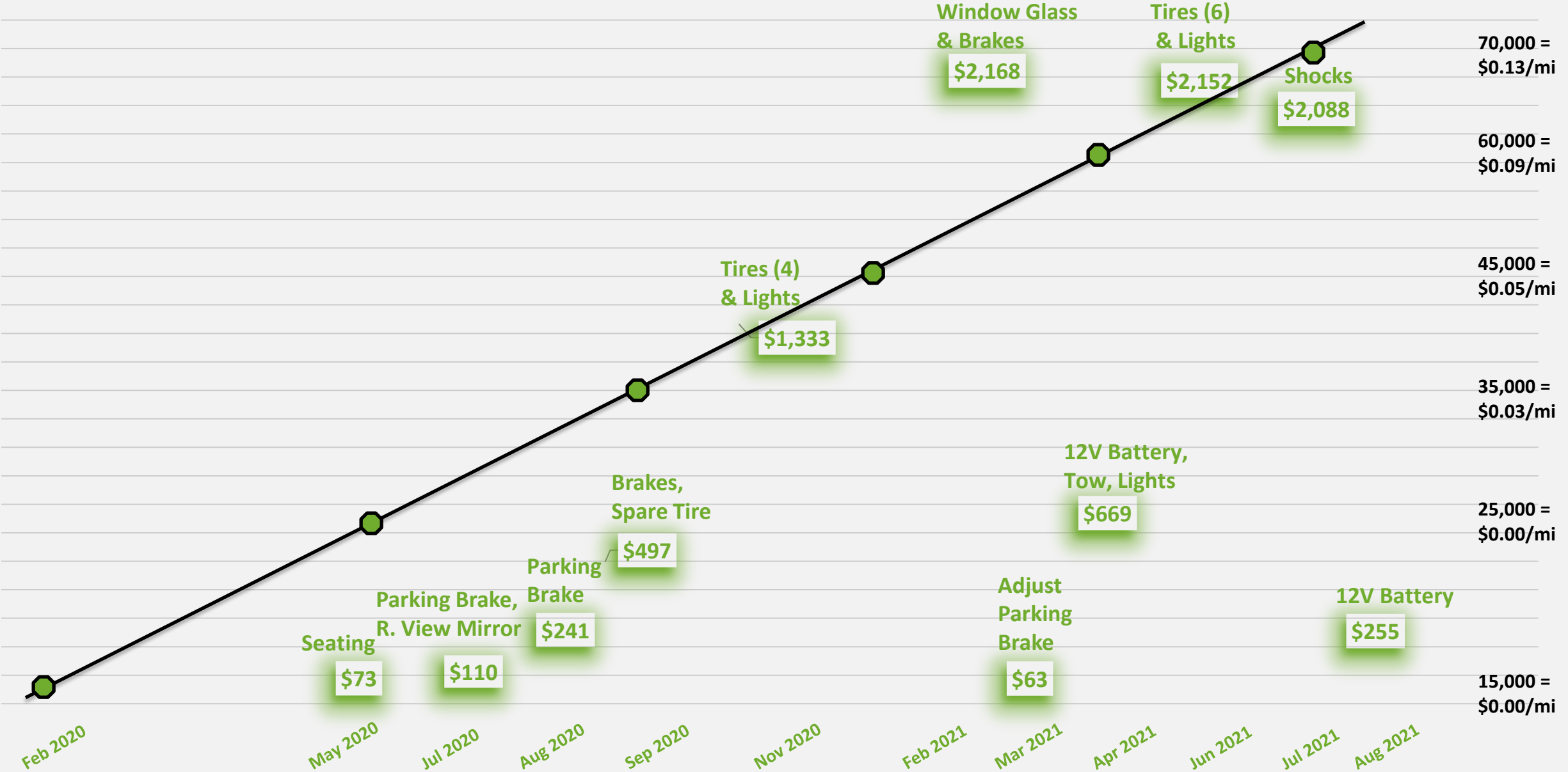
(Preventive Maintenance Inspections not included)

2 Years.  
(73k miles 8-2019 to 8-2021)

\$9,650.  
(Fleet cost)

1 Yr. \$/Mi.  
(\$0.00)

2 Yrs. \$/Mi.  
(\$0.03 to \$0.13)



Lisa McGhee

Lisa@Greenpowermotor.com



www.GreenPowerMotor.com



8885 Haven Ave. Ste 150, Rancho Cucamonga CA,  
91730



(909) 681-7759, Lisa McGhee



linkedin.com/company/GreenPowerBus



fb.com/GreenPowerMotorCo



@GreenPowerBus



@GreenPowerMotorCo



<https://greenpowermotor.com/calculator-intro/>



Assumptions or  
Forward Looking  
Statements



This document can contain assumptions or forward-looking statements relating to operational savings, among other things but are not limited to, GreenPower's design of battery electric zero emission vehicles; business and operations and the environment in which it operates, which are based on GreenPower's operations, estimates, forecasts and projections. Forward-looking statements are not based on historical facts, but rather on current expectations and projections about future events, and are therefore subject to risks and uncertainties which could cause actual results to differ materially from the future results expressed or implied by the forward-looking statements. These statements generally can be identified by the use of forward-looking words such as "upon", "may", "should", "will", "could", "intend", "estimate", "plan", "anticipate", "expect", "believe" or "continue", or the negative thereof or similar variations. These statements are not guarantees of future performance and involve risks and uncertainties that are difficult to predict or are beyond GreenPower's control. A number of important factors including those set forth in other public filings (filed under the Company's profile on [www.sedar.com](http://www.sedar.com)) could cause actual outcomes and results to differ materially from those expressed in these forward-looking statements. Consequently, readers should not place any undue reliance on such forward-looking statements. In addition, these forward-looking statements relate to the date on which they are made. GreenPower disclaims any intention or obligation to update or revise any forward-looking statements whether as a result of new information, future events or otherwise.

Neither the TSX Venture Exchange nor its Regulation Services Provider (as that term is defined in the policies of the TSX Venture Exchange) accepts responsibility for the adequacy or accuracy of this release. © 2021 GreenPower Motor Company Inc. All rights reserved